



Stops on Calendar Spreads

October 6, 2010

This material may not be reproduced or redistributed in whole or in part without the express, prior written consent of IntercontinentalExchange, Inc.

© Copyright Intercontinental Exchange, Inc. 2010. All Rights Reserved.

Stops on Calendar Spreads

ICE Futures U. S., Inc. will begin offering Stop Limit and Stop with Protection order types for Calendar Spread markets. They will follow the same order entry validations as monthly stops do.

Order Entry Validation

Buy Stop Limit must be placed higher than best offer price, if there is no offer price than it will validate against anchor price for that spread.

Sell Stop Limit must be placed lower than best bid price, if there is no bid price than it will validate against anchor price for that spread.

Limit price validations

Buy stop limit's limit price must be at or higher than the stop price and cannot have a point differential greater than the range set by the Exchange from the stop price – this range is referred to as the “Spread Stop Limit Order Range”.

Sell stop-limit's limit price must be at or lower than the stop price and cannot have a point differential greater than the Spread Stop Limit Order Range from the stop price.

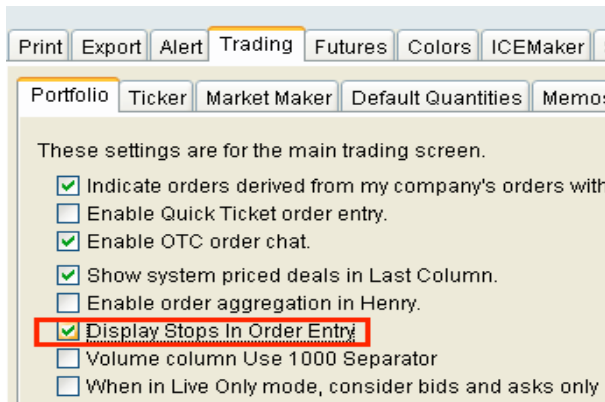
Stop With Protection

Example of Stop With Protection:

- The Cocoa Spread Stop Limit Order Range allows 10 ticks +/- for the difference between stop and limit price.
- User enters a Stop With Protection on the Mar/May Spread at 120
- When stop is elected, a limit price will be set within the ETS trading engine at 130 (Stop Price + 10 ticks)

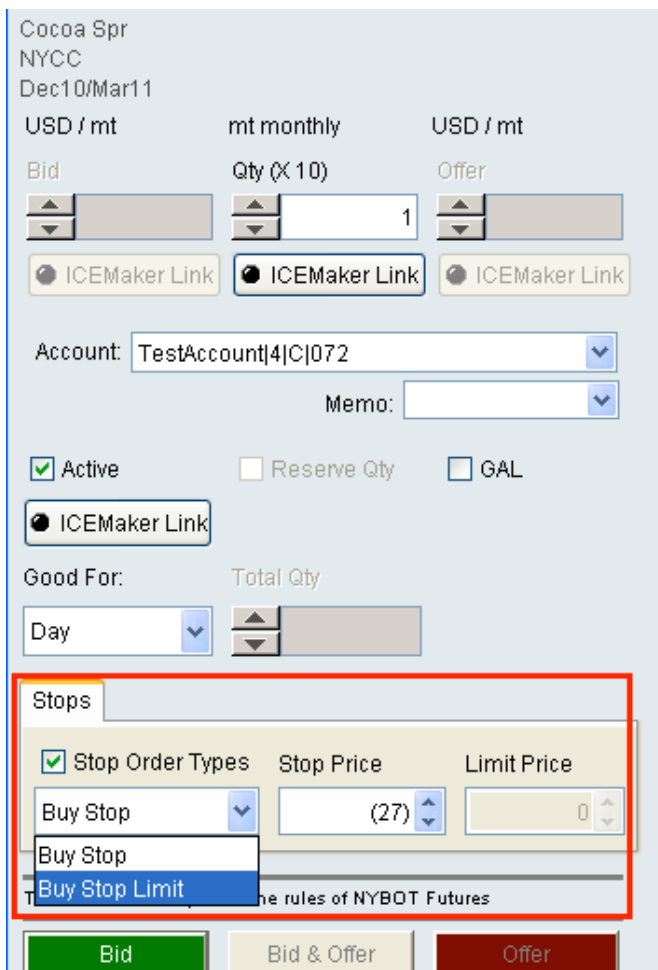
WebICE

To enable stops in the WebICE order entry window, if not currently set, go to user preferences/trading/portfolio and check the “Display Stops in Order Entry” feature.



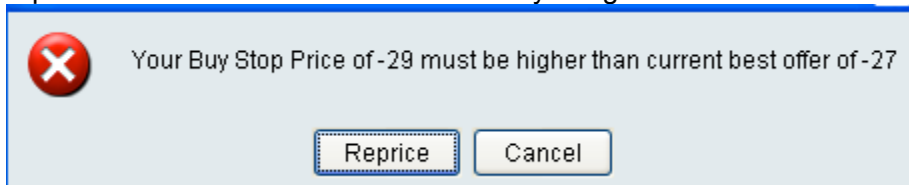
Checking the “Stop Order Types” in the order entry window will disable the price fields and force the user to 1) Define the Stop type and 2) Set the appropriate Stop and Limit price (depending on the type selected).

Opening a Buy Order entry window will only display Buy Stop or Buy Stop Limit. The Buy Stop is the Buy Stop With Protection.

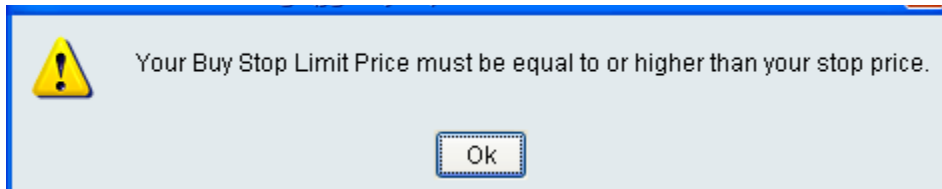


The default price for the stop value on a buy stop is the best offer price/last price and for a sell stop the best bid/last price will be used.

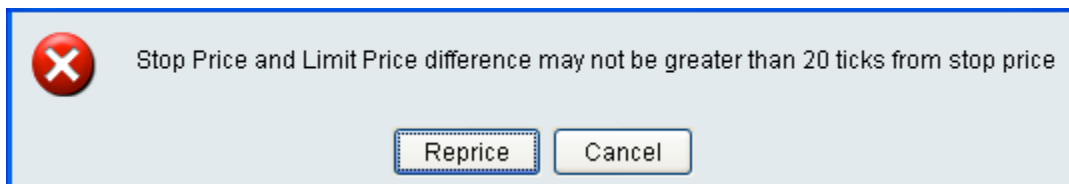
If a user attempts to enter a Buy Stop below the Best Offer price an error will appear. User may reprice the order or cancel the order entry altogether.



If a user attempt to enter a Buy Stop Limit where the Stop price is higher than its limit price an error will appear.



If a user attempts to enter a Buy stop limit where the limit price is greater than the allowable distance from the stop price a warning will appear. User may reprice the limit or stop price to acceptable values.



Order Management

Stop-Limit and Stop With Protection orders will not appear in the trading area. These orders will only be seen and managed by the user who entered and the colleagues that are permitted to see it. These order types are only visible in the order book.

Orders											
Deals			sugar			sugar spds			sug spd 2		
Hold All Activate All											
Portfolio:	Orders:	State:	Type:	Product:	Hub:	Strip:	Account:	Trader:	Company:		
All	My	All	All	All	All	All	All	All	All		
Kill	Active	Type	Price	Qty	Stop Price	Product	Account	Strip	Stop Status	Order ID	
X	<input checked="" type="checkbox"/>	Buy Stop Limit	-18	10	-23	Cocoa Spr	TestAccount	Dec10/Mar11	Stop Limit	326757546	
X	<input checked="" type="checkbox"/>	Sell Stop		5	-35	Cocoa Spr	TestAccount	Dec10/Mar11	Stop	826774028	

Stop-limit orders will display both stop and limit prices. A stop-limit order must be made inactive to edit/adjust the limit and/or stop price.

The Stop order (with protection) will only display the stop price.

The Stop status column will display the current status of the order. When a stop is elected it will become a limit and if not completely filled will rest in the market at its limit price. At that time the stop status will display “elected”.

Orders													
Deals				sugar			sugar spds			sug spd 2		sug tas	
Hold All Activate All													
Portfolio:	Orders:	State:	Type:	Product:	Hub:	Strip:	Account:	Trader:	Company:	Memo:			
All	My	All	All	All	All	All	All	All	All	All			
Kill	Active	Type	Price	Qty	Stop Price	Product	Account	Strip	Stop S...	Order ID	Total Qty	Filled Qty /	Res ...
X	<input checked="" type="checkbox"/>	Bid	-29	1		Cocoa Spr	TestAccount	Dec10/Mar11		926852130	1	0	N
X	<input checked="" type="checkbox"/>	Sell Stop		5	-35	Cocoa Spr	TestAccount	Dec10/Mar11	Stop	826774028	5	0	N
X	<input checked="" type="checkbox"/>	Bid	-18	8		Cocoa Spr	TestAccount	Dec10/Mar11	Elected	326757546	10	2	N

Markets where the user is working a stop will see an * in the market strip column

Product	Hub	Strip
Cocoa Futures	NYCC	Sep10
Cocoa Futures	NYCC	Dec10
Cocoa Futures	NYCC	Mar11
Cocoa Spr	NYCC	Dec10/Mar11 *

Additional Spread Stop-Limit and Spread Stop With Protection information:

- They can be GTC (“good til cancel”) or GAL (“good after logout”)
- Can be entered in pre-open
- Can be elected off implied deals in the spread market (except at open)
- Will **not** allow Reserve Quantity
- **Cannot** be linked agents (ICE Maker / Formula Trader)

- Will **not** be factored into the uncrossing match price in opening algorithm. If opening match price* triggers the stop it will then be converted to the limit order and placed for matching. If unfilled, will rest in the market.
- If stop is elected and limit price is deemed unreasonable, at that time, the order will be withdrawn.
- Statuses will appear in the “While you were out window” at WebICE login.
- GTC Order report (available on trader dashboard) allows user to view all status and history for GTC order.

*When a spread matches with an implied spread order at open, that price is excluded from Hi, Lo and WAP. The last price is indicated with a “U” to notify the market that this price is a result of implied pricing at open and may trade at a price through the resting best bid or offer price where more volume exists than where traded. The implied price flagged with a “U” is not factored in opening algorithm and market stats and therefore will **NOT** elect a stop order.